

KC868-H8 Device User Manual (V0508)

I . Software Downloading

II . Remote Controlling Operation

1. Mobile APP controlling manual
2. Computer Program controlling manual (WAN mode)

III. Local Controlling Operation (LAN mode)

I . Software Downloading

1. Use mobile phone to scan the below QR code to download the APP



1. KC868-H8 software (Phone APP QR code, PC Program, Vircom Network Tool) downloading link:

www.kincony.com/download/Disk_KC868-H8.rar

Please download the file to have the software firstly, as below, it is default you already have and know them.

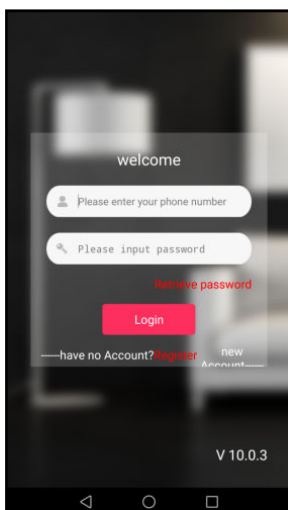
II . Remote Controlling Operation

1. Mobile APP controlling manual

1.1 Power on the device and connect the internet cable

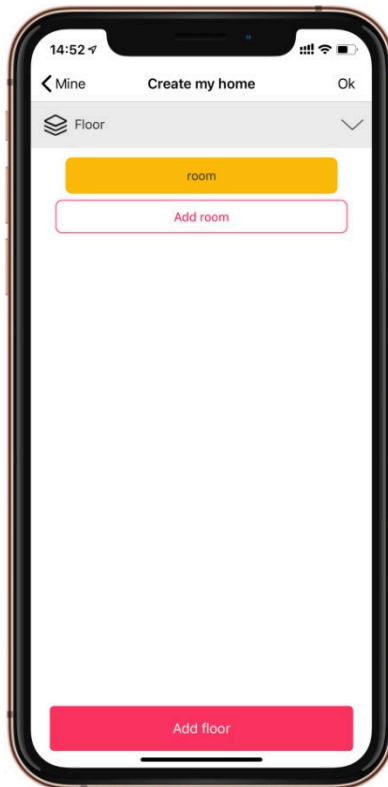
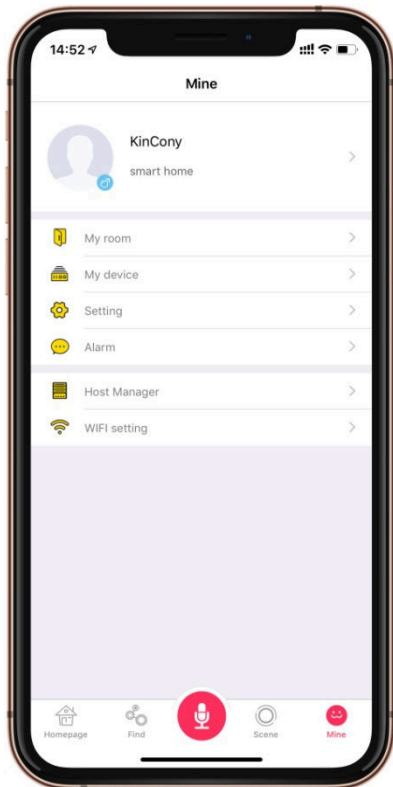
1.2 Register

After downloading and installing the APP, Register your account (11 digitals) and password, (Pls make a note for your password in case forgotten).



1.3 Adding device

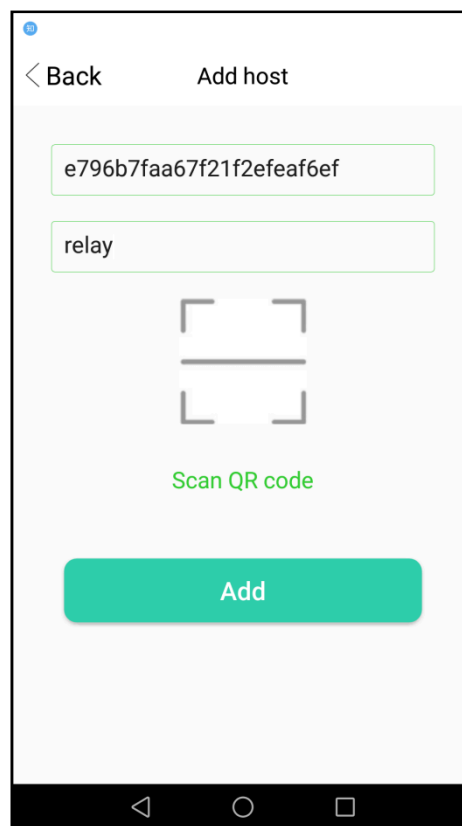
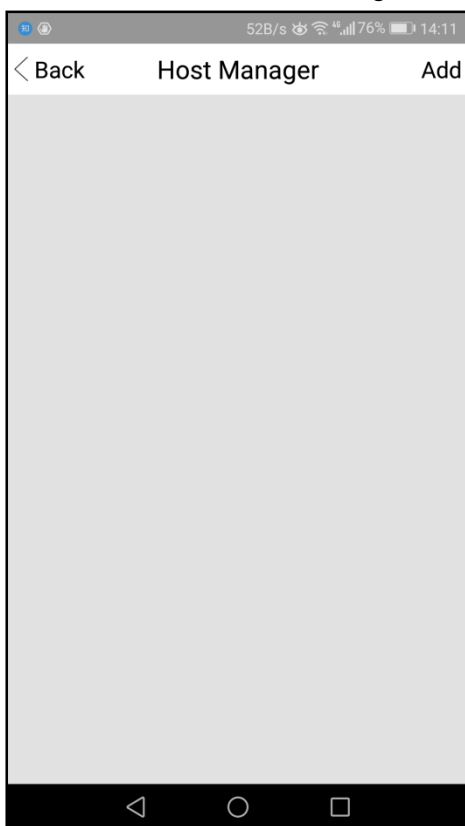
Login in, choose 【Mine】-【My Room】, add floor and room(this step is necessary, please make sure this)



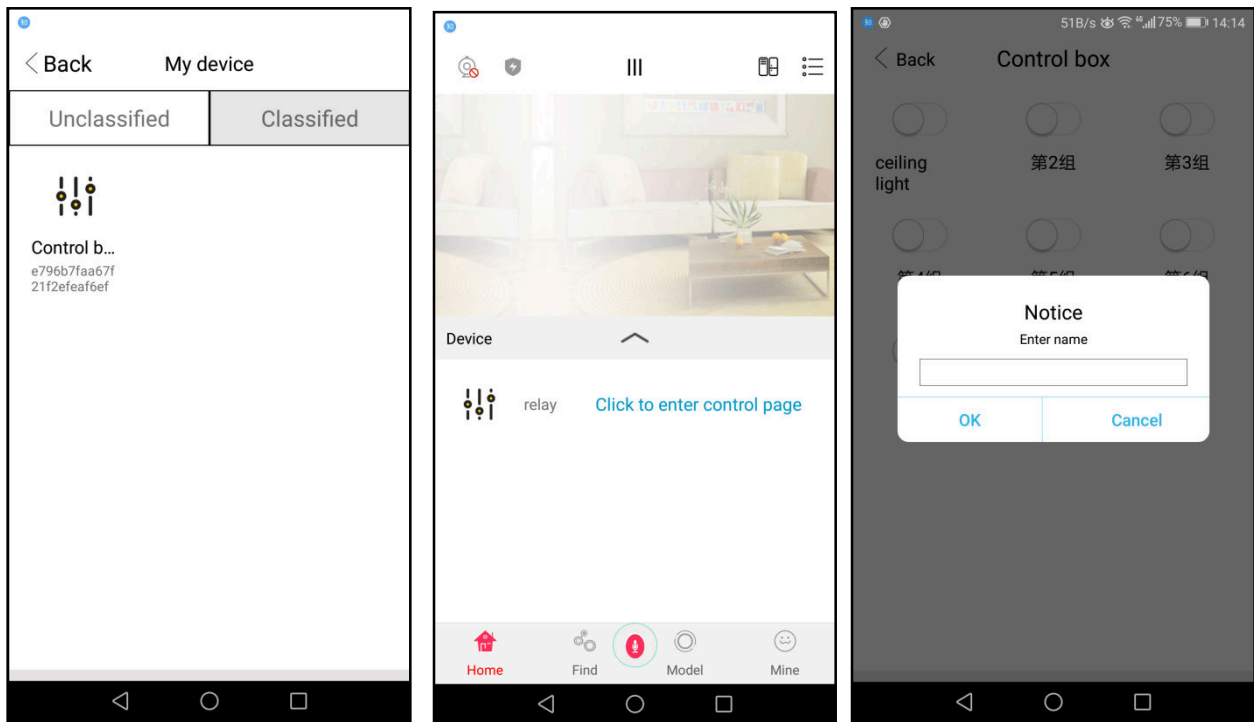
Floor and Room can be renamed randomly, then click **【OK】**

Choose **【Mine】** - **【Host Manager】** ,click **【add】** ,scan the QR code on the device, and input a name.

Click **【Add】** to finish adding device



Click **【Mine】** - **【My Device】** - **【Unclassified】** ,Hold pressing the ICON to choose one room
And give a name for the device.



Hold pressing the number of the relay, the name can be renamed.

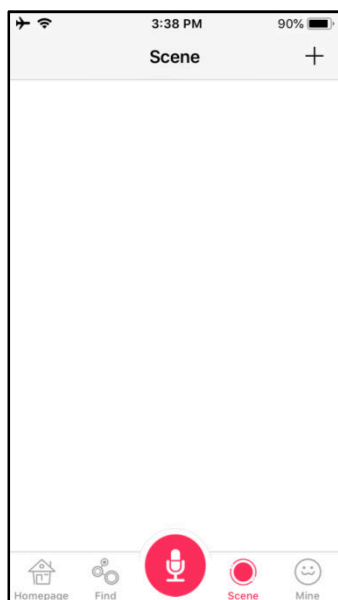
Now adding device is completed, the device can be controlled by mobile APP.

1.4 Create Scene Mode

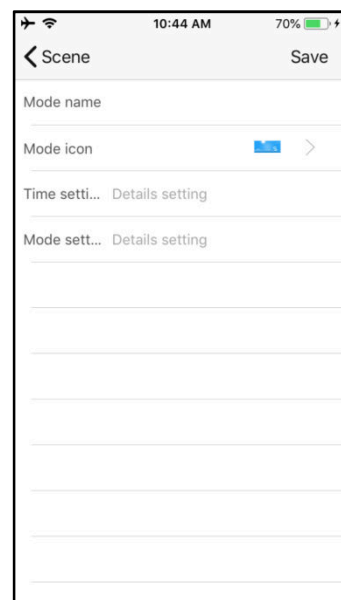
Login in APP, Click **【Scene】** — **【+】** or **【Add】** --Input Mode name, choose Mode icon,

Time setting Optional(Function of timing), at **【Mode setting】**, input the actions you want to control, click**【Save】**;

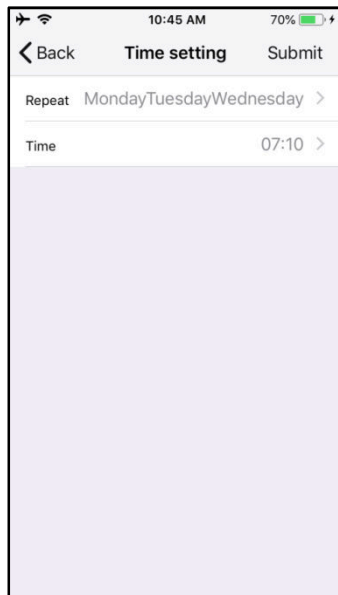
see below pic4-2, pic4-3, pic4-4, pic4-5.



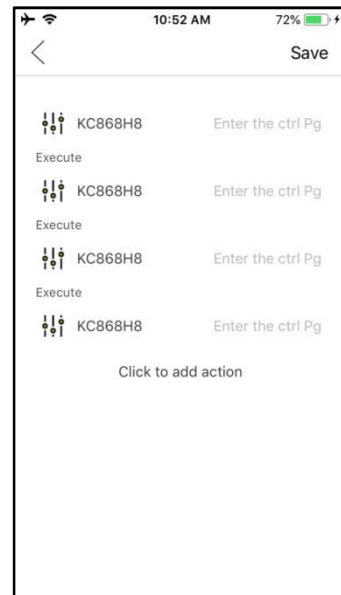
Pic4-2 Add Scene



Pic4-3 Add Scene



Pic4-4 Time setting (Optional)



Pic4-5 Mode setting (Actions controlled)

“Mode name” can be named; e.g.: Back Home, Leaving Home, Meeting;

“Mode icon” can be changed;

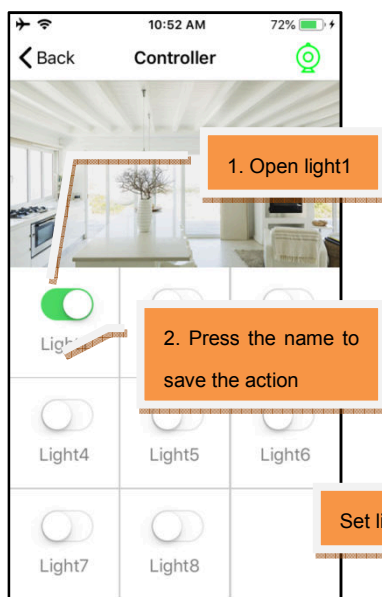
“Time setting” is for timing (optional), Pic4-4, Repeated time: Monday, Tuesday, Wednesday and 7:10 am.

Meaning the scene mode is opened at 7:10 am each Monday, Tuesday and Wednesday.

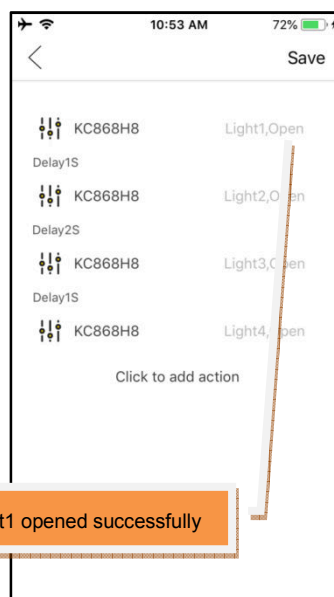
“Mode setting” is for adding the actions required to control

1. Press ‘Click to add action’, choose KC868H8
2. Press [Enter the ctrl pg], you can set the actions, see Pic4-7
 - a. Open light1
 - b. Press the name, it will save the action
3. Press Execute, you can set Delay time
4. Press ‘Save’

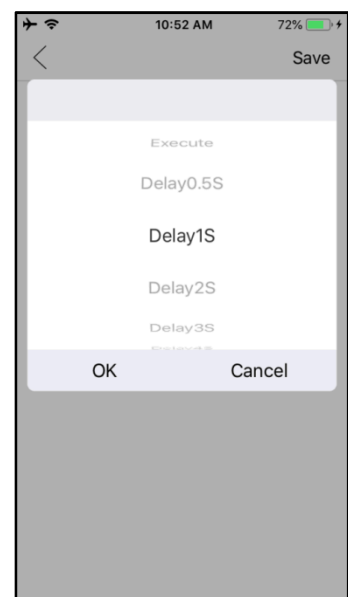
See Pic4-6, Pic4-7, Pic4-8.



Pic4-6



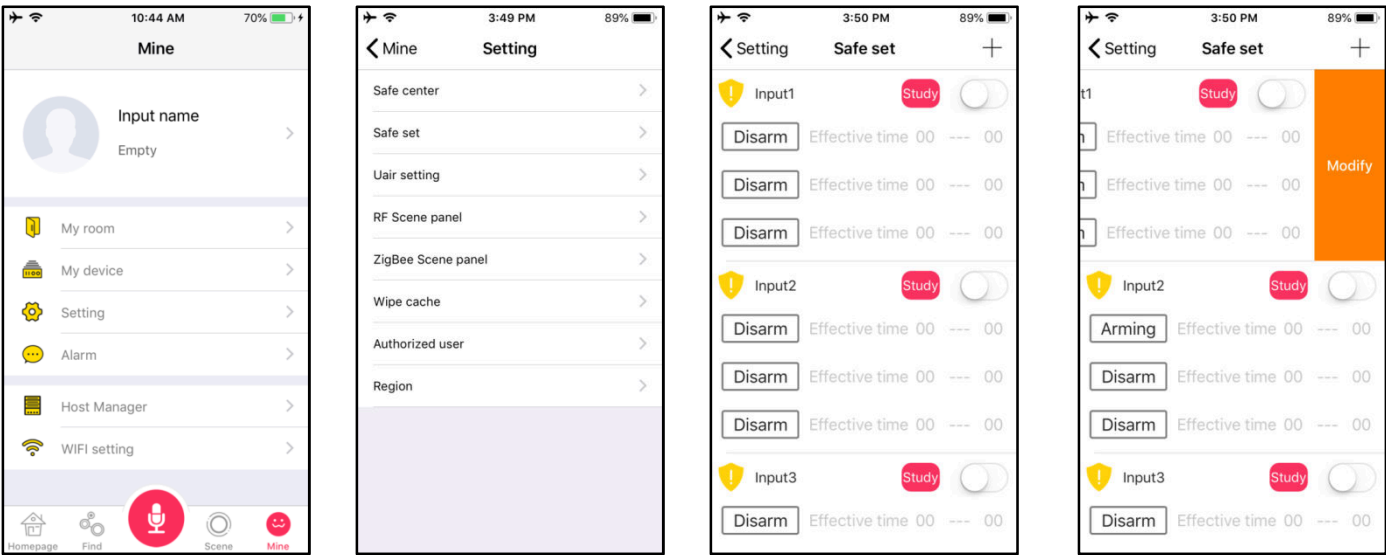
Pic4-7



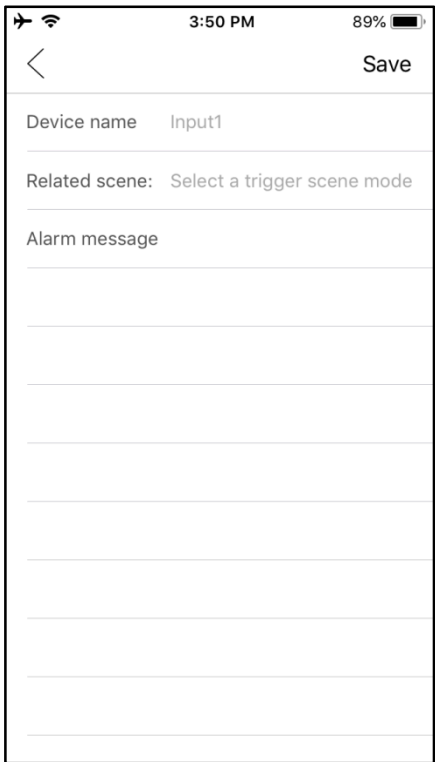
Pic4-8

II. Inputting terminals trigger linkage of the scene mode

Click **【Mine】** ---- **【Setting】** -- **【Safe set】** ,Hold pressing **【input1】** to left,
The parameters can be modified.

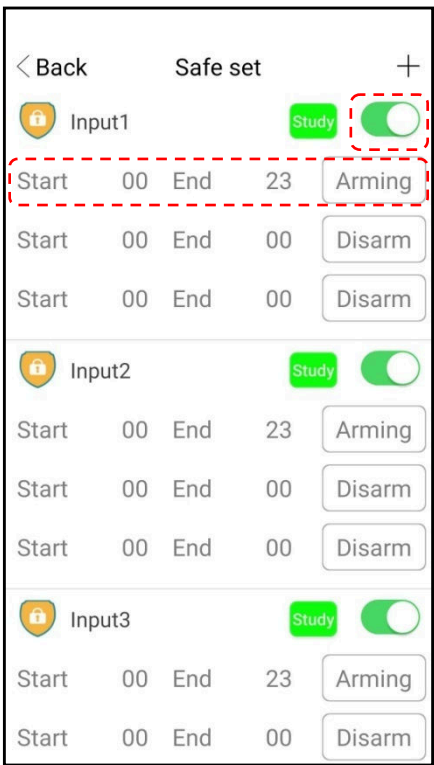


- 【Device name】** : input one name
- 【Related scene】** click to choose one scene mode to linkage
- 【Alarm message】** Input message text sent to mobile(setting message allowed);



when inputting terminals are triggered, the phone will receive **【Alarm message】** ;

And the actions of the scene mode will be opened



- 1、 Turn on the alarm button
- 2、 Start 00-23 and Arming

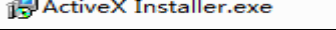
(00-23 means Arming the whole day.

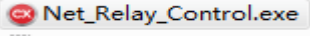
00—08 means Arming from 00:00 to 08:59)



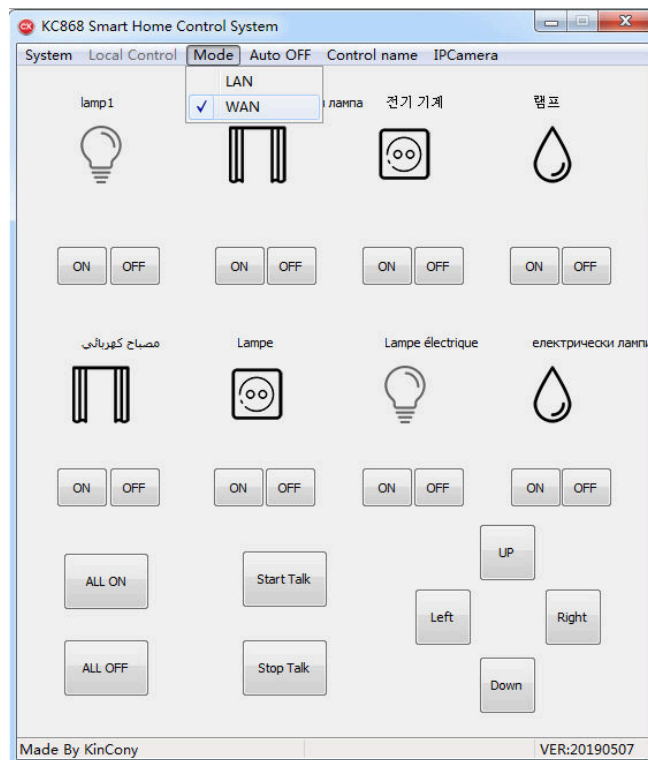
2. Computer Program controlling manual (WAN mode)

2.1 Power on the device and connect the internet cable

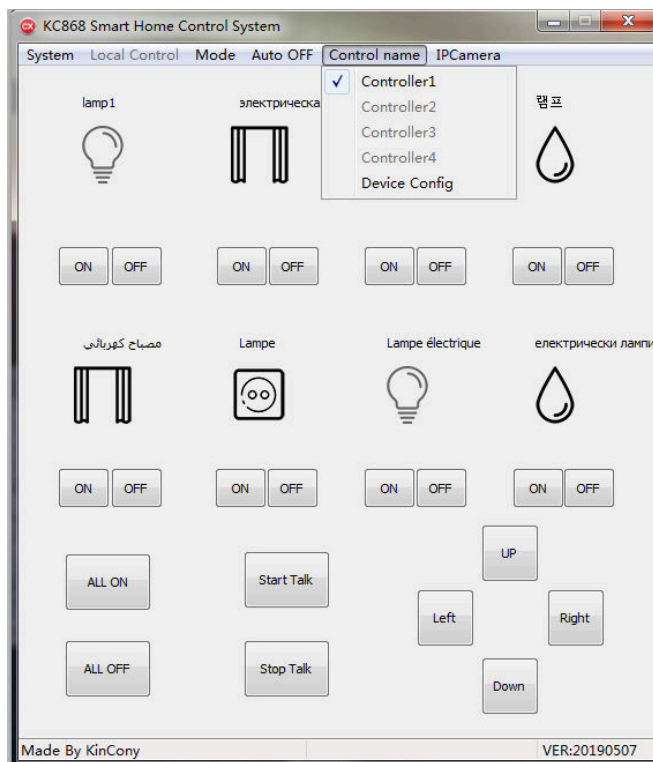
2.2 The first time to use the program, double click  to install the ActiveX Installer.

2.3 Then double click  to open the program and setup the configuration

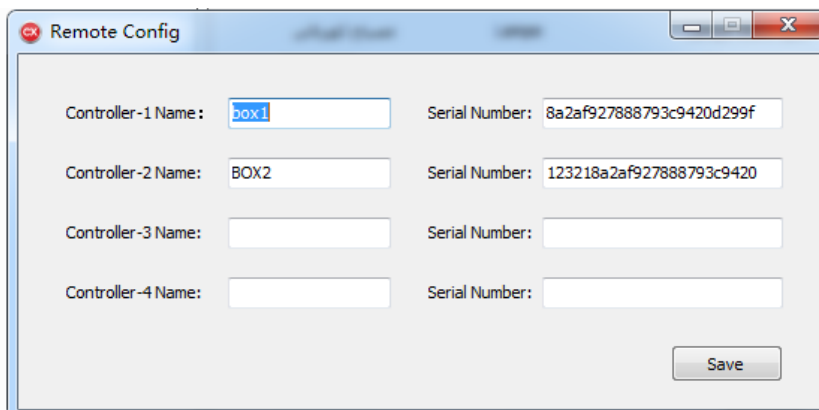
Step 1: Choose **【Mode】** - **【WAN】**



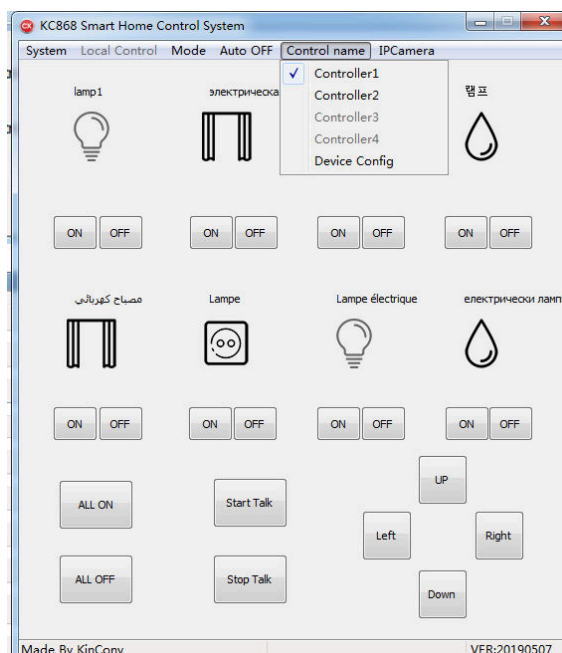
Step 2: click **【Control Name】** - **【Device Config】**



Step 3: Input Name and Serial Number of the device, then click **【Save】**
(Serial Number is the 24 digitals on the QR code on the device)



Step 4: Choose Controller



2.4 Close the program and then open it again.

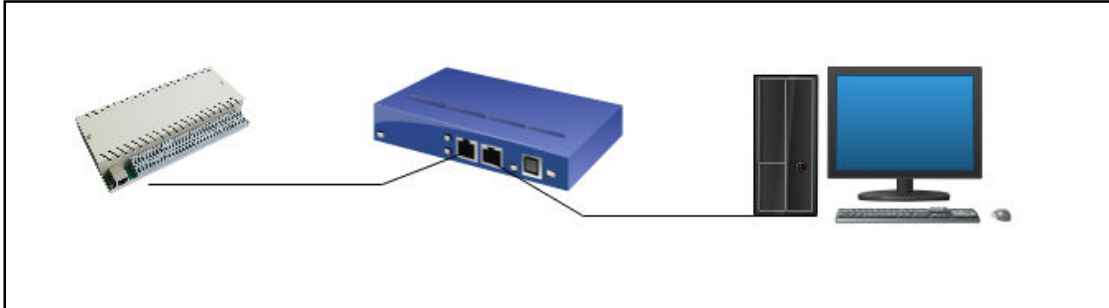
Choose **【Mode】** - **【WAN】**

Now the program can control the device remotely

III. Local Controlling Operation (LAN mode)

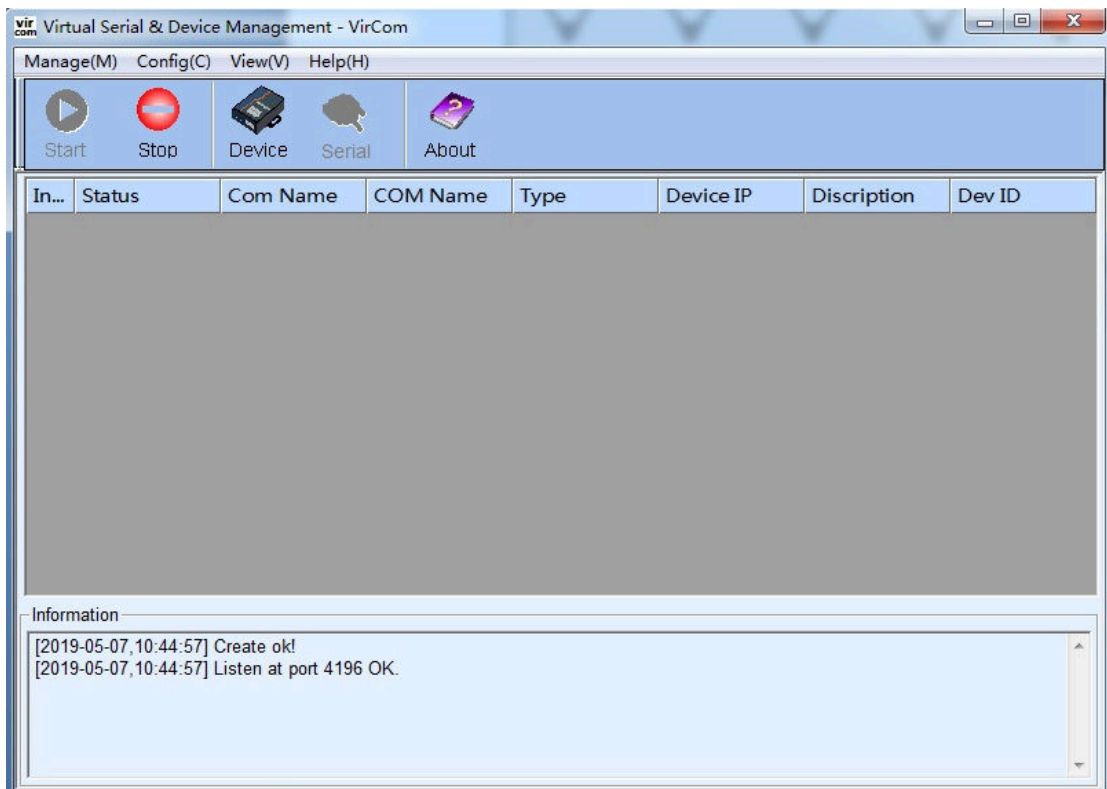
1.1 Power on the device and connect the internet cable

1.2 Make sure your computer and the device are belonging to the same local internet

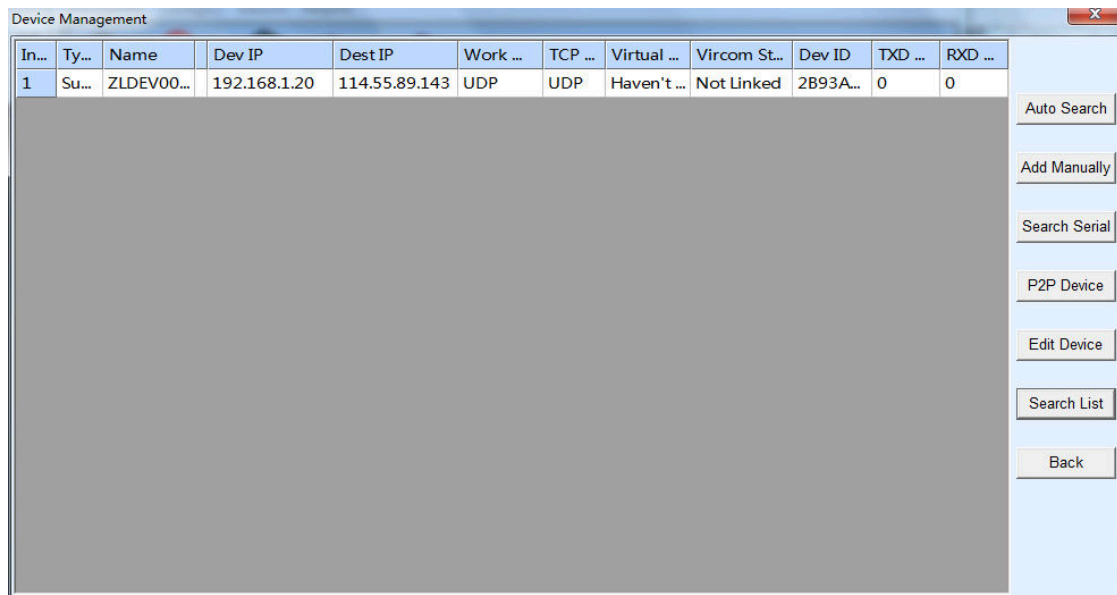


1.3 Open the “Vircom Network Tool”, and setup the configuration of the device

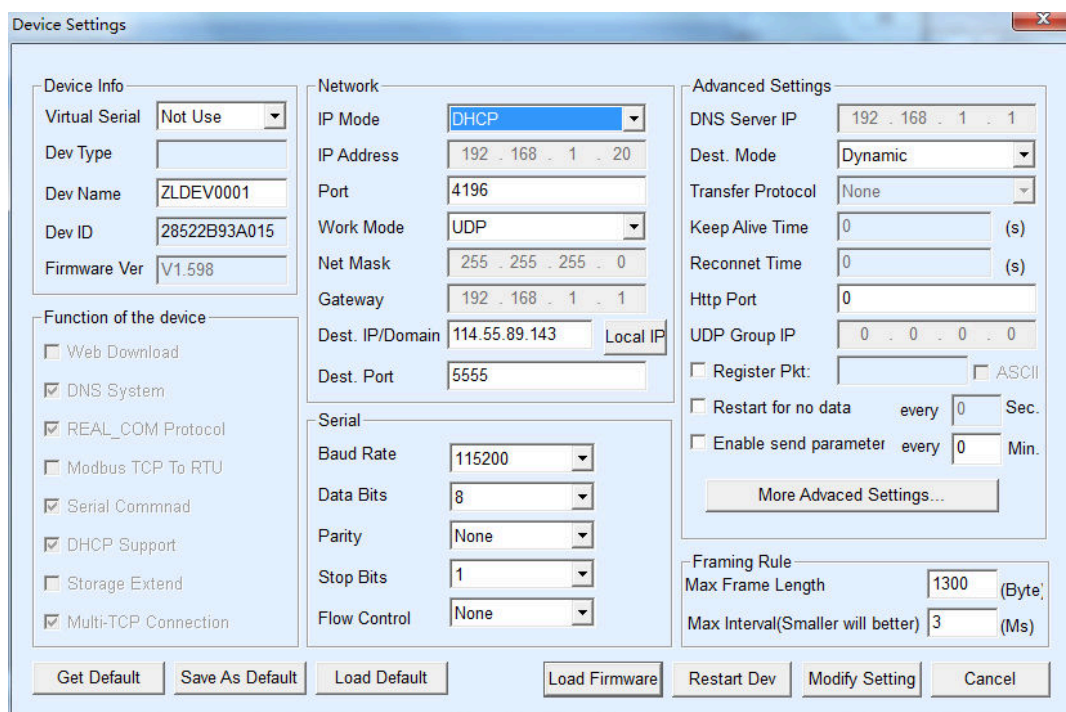
Step 1: Click **【Device】**



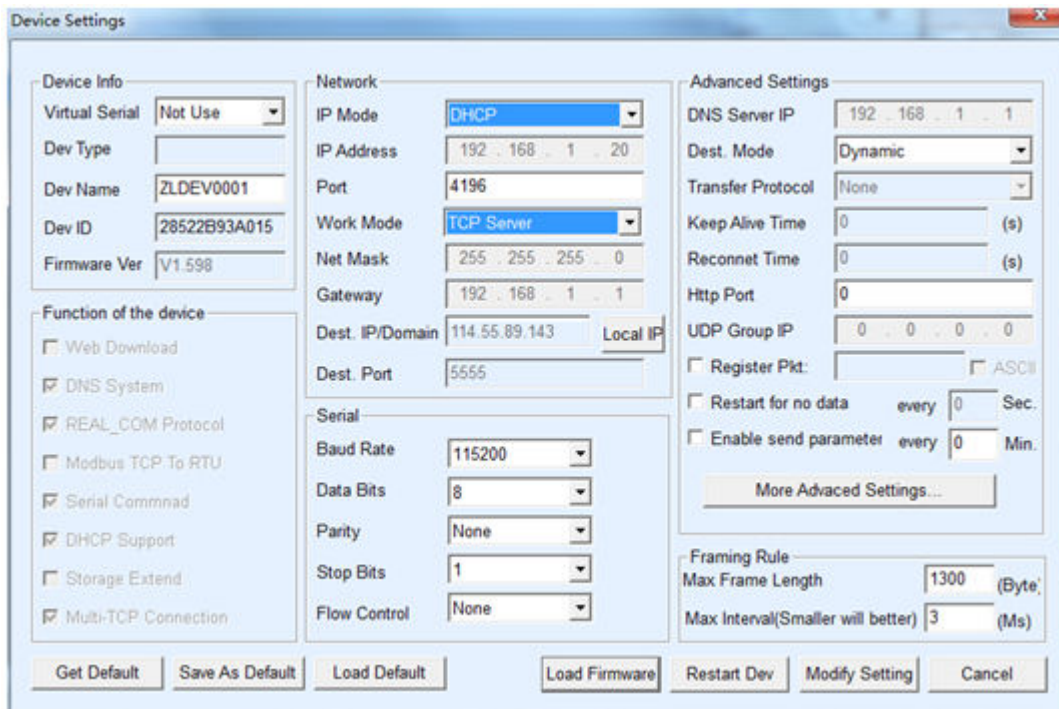
Step 2: Click **【Auto Search】**



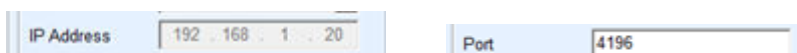
Step 3: Click 【Edit Device】



Step 4: Choose "TCP Server" for the 【Work Mode】, instead of "UDP"




Step 5: Make sure keeping the others unchanged, meanwhile remember the IP Address and Port



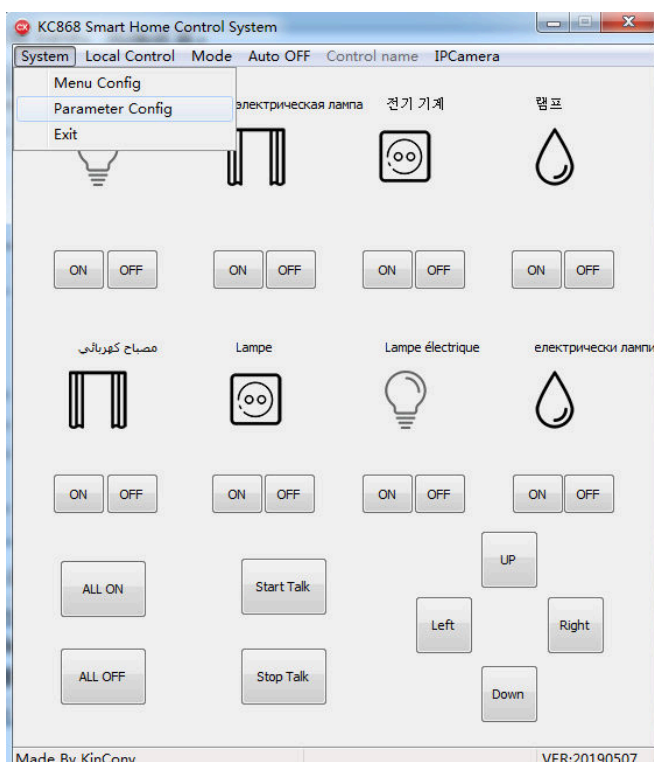
The IP and port will be required as following; you can open the tool and check back when you forget.

Step 6: Click **【Modify Setting】** to finish the setup, then re-power the device and wait for approx one minute
You may not close the Vircom network tool program in case you want to check the IP and Port.

1.4 The first time to use the program, double click  **ActiveX Installer.exe** to install the ActiveX Installer.

1.5 Then double click  **Net_Relay_Control.exe** to open the program and setup the configuration

Step 1: Choose **【System】** - **【Parameter Config】**



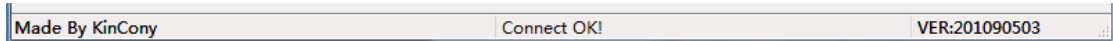
Step 2: Input the IP number and Port number as remembered from the Vircom network tool.

The 'Config' window is divided into three main sections: 'NetWork Config', 'Title Config', and 'Device Config'.

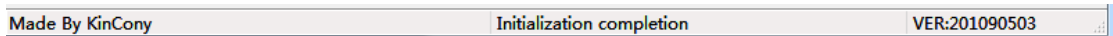
- NetWork Config:** Contains input fields for 'IP:' (192.168.1.20) and 'Port:' (4196).
- Title Config:** Contains input fields for 'SoftWare Title:' (KC868 Smart Home Control System) and 'CopyRight:' (Made By KinCony), along with 'Save' and 'Cancel' buttons.
- Device Config:** A grid of 8 light controls. Each control consists of a text label, a set of icons (light bulb, window, etc.), and 'ON ICO'/'OFF ICO' buttons.
 - Light1: lamp1
 - Light2: электрическая лампа
 - Light3: 전기 기계
 - Light4: 램프
 - Light5: مصباح كهربائي
 - Light6: Lampe
 - Light7: Lampe électrique
 - Light8: электрически лампы

Then click **【Save】** to return

Step 3: Click **【Local Control】** - **【LAN Connect】** , **【Connect OK!】** is showed at the bottom



Step 4: Click **【Local Control】** - **【Initialization】** , **【Initialization completion】** is showed at the bottom



Step 5: After waiting for approx one minute, you can control the device by the program locally.